



Workspace Technology Collection

Bringing your environment to life

Add your brand here

**Start using the
Workspace Technology Collection
with your clients now!**

Download the ST Tech Accelerator Kit
to launch your supply ready range

Welcome to the Workspace Technology Collection

A curated selection of AV & IT solutions designed to enhance how your business communicates, collaborates and operates.

Workspaces are evolving meeting rooms and shared areas to support communication and hybrid working, technology play a key role in creating environments that are productive and engaging.

This Collection offers a range of products and services available for your workspace, including **digital displays, meeting room solutions, managed services, security support and sustainability guidance**.

Whether you are exploring ideas, planning a refresh or working on a live project, we can support you at every stage. With access to trusted suppliers and experienced installation partners, you receive a complete service from product selection through to installation and ongoing support.

Discover what is possible for your workspace.

Have a project in mind?

Contact us today for all your AV & IT requirements.

Create a Smarter Meeting Room Experience



The All in One Collaboration Display

A complete solution for the meeting room and beyond

horion

Everything your meetings need to collaborate, present and connect

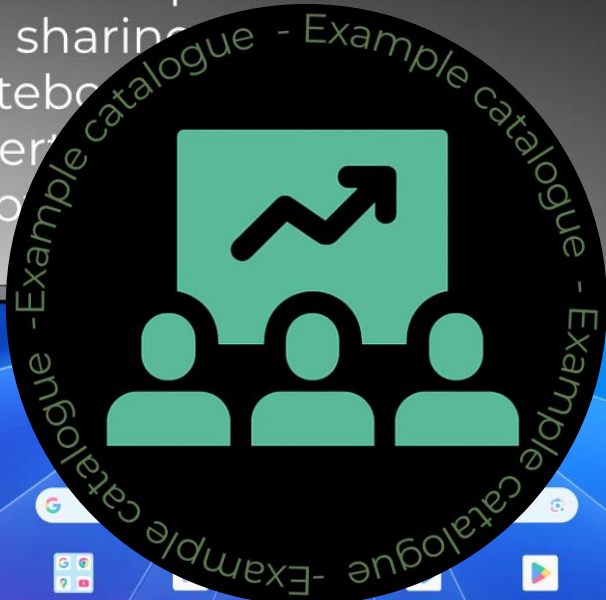
The M6APro V2

All in One Collaboration Solution

Certified Google Integration



- AI quad-camera with intelligent framing
- crystal clear room audio with 12m pickup
- premium integrated speakers + subwoofer
- wireless screen sharing
- interactive whiteboard
- Google EDLA certified
- 65" / 75" / 86" options



Seamless access to the Google tools you use every day

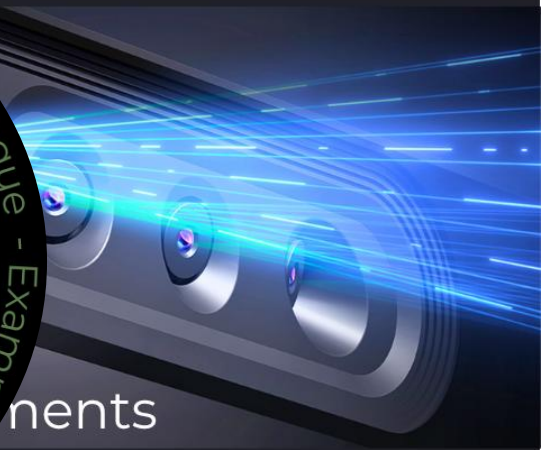


Designed for Every Collaborative Space



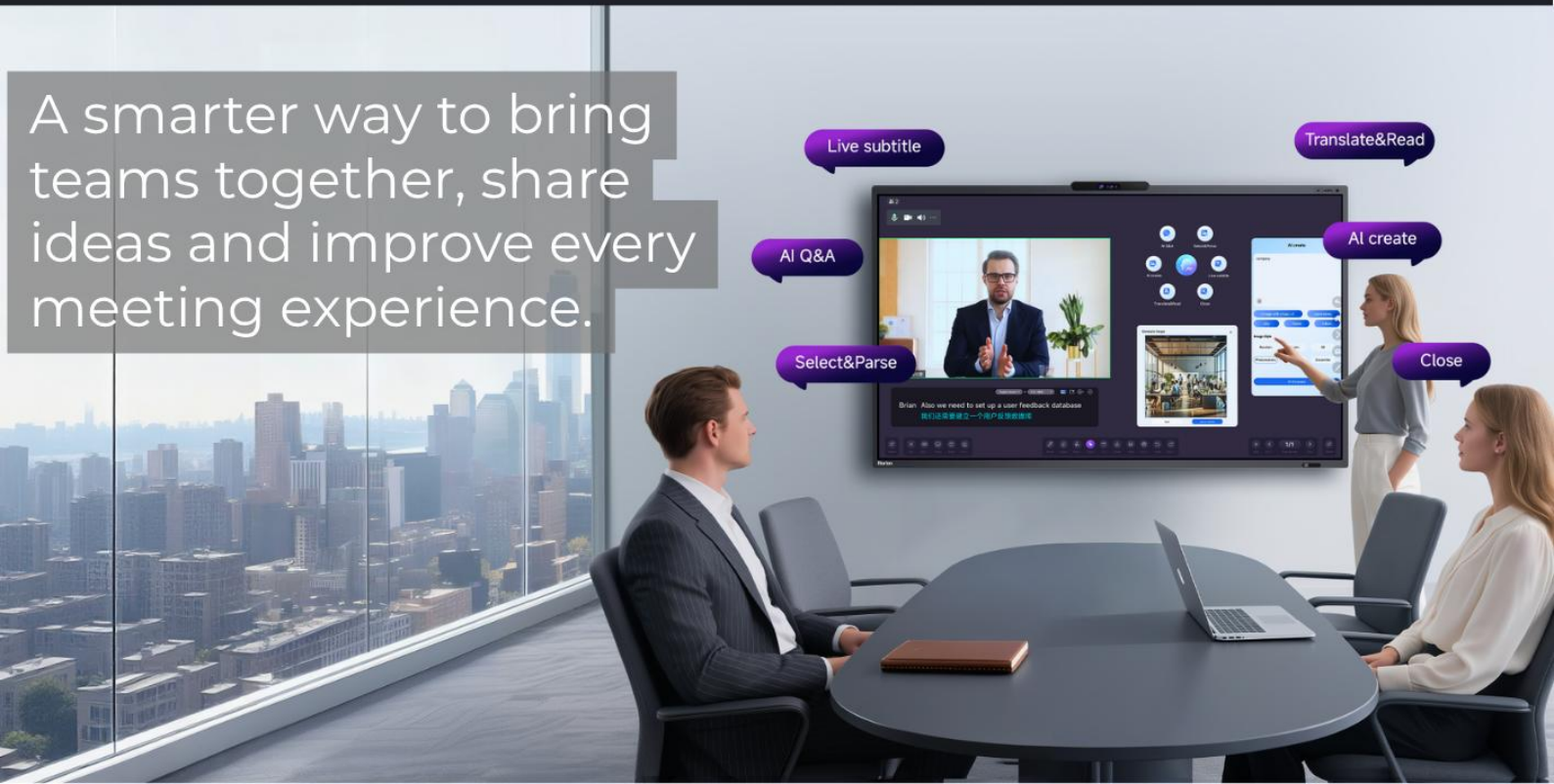
Perfect for:

- boardrooms
- training rooms
- customer presentations
- creative collaboration
- education and training
- reception and client meetings



Available wall mounted or mobile trolley solution to suit every workspace.

A smarter way to bring teams together, share ideas and improve every meeting experience.

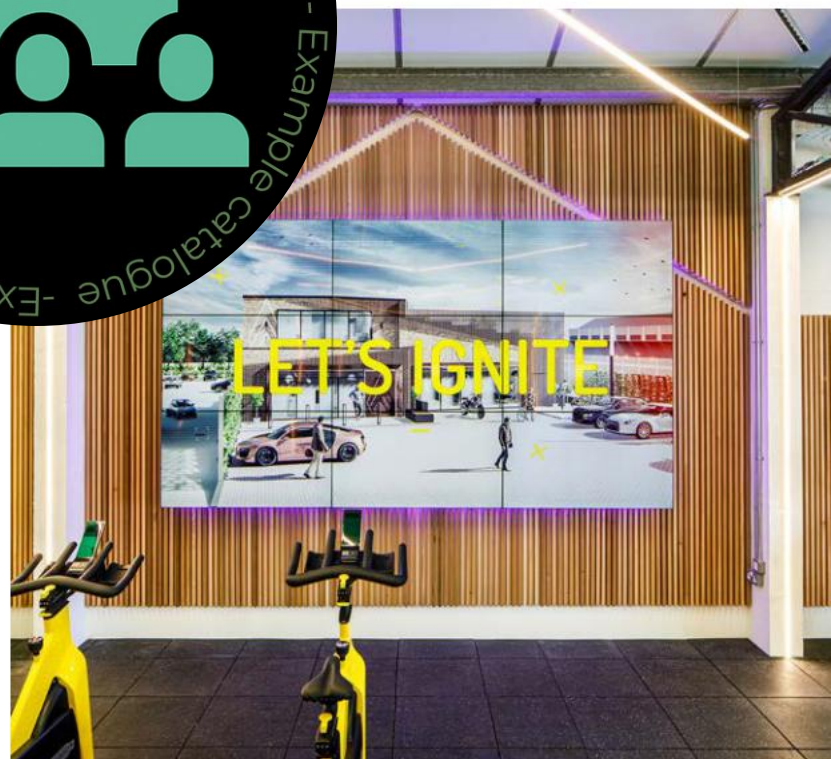


PRODUCT CATALOGUE



DIGITAL SIGNAGE

Products and Solutions Catalogue



Complete range of indoor and outdoor digital display solutions with mounting solutions

Supported by easy Content Management Software

Industries

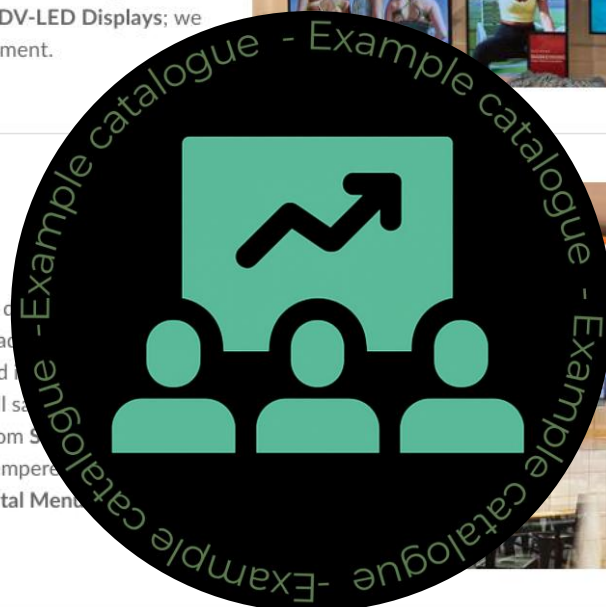
Retail

The retail sector is by far the most popular area for digital signage, with shops fighting to grab customers' attention in a competitive battleground. When compared to static signage, digital signage captures 400% more views¹. We have an array of different digital signage solutions that are ideal for retail spaces. Our portfolio includes **Window Displays**, a selection of digital posters such as our **Slimline Pro Advertising Displays**, a variety of **touch screens** and **DV-LED Displays**; we truly have solutions for any retail requirement.



Food and Drink

This sector is the fastest growing area for digital signage. Large fast-food chains are already taking advantage of the tremendous benefits of digital signage and advertising since it creates a 31.8% upswing in overall sales¹. We offer a range of different solutions, from **Advertising Displays** with a wipe-clean tempered glass front to **cost-effective narrow bezel Network Digital Menu Boards**.



Corporate

The integration and application of commercial display technology into the office spaces and meeting rooms continues to grow. The most obvious use for digital signage in corporate locations is in the boardroom, using **LCD** and **DV-LED Video Walls** as well as **4K Slim Bezel Interactive Touch Displays** as presentation tools. The use of digital signage for internal communication is another developing area that has proven to increase productivity by 20%-25%¹.



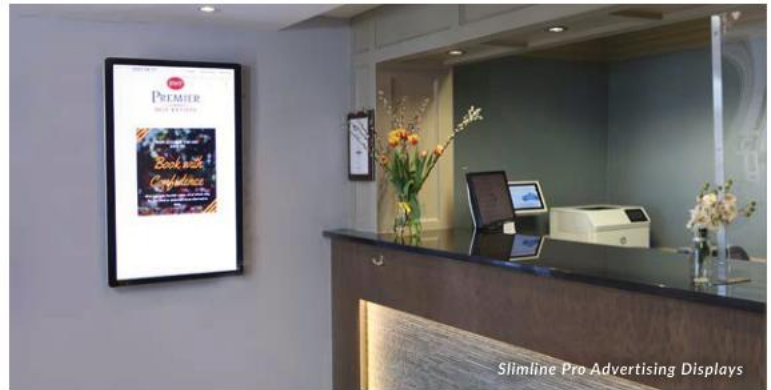
Healthcare

Digital signage is transforming the way that hospitals and healthcare facilities communicate with staff and patients. The **Android PCAP Touch Screens**, when used in hospital and medical facilities, are perfect for use in hospitals and medical facilities for wayfinding or displaying healthcare information thanks to their easy to clean edge-to-edge glass front. A Digital signage offers a chance for hospitals to inform, engage and interact with their patients to improve the level of care that they offer.



Hospitality

Hospitality settings such as hotels, resorts, nightclubs and catering venues have a captive audience looking for information, so they are a natural home for digital signage. Eye-catching displays, such as our elegant and aesthetically pleasing **Android Freestanding Digital Posters** and wall-mounted **Slimline Pro Advertising Displays**, can be used to boost customer satisfaction by 46%¹.



Transport

Transport hubs such as airports, train and bus stations, and even bus stops have become the most common places to encounter digital signage. Whether it is to display departure times or in duty free areas, with over 90% of train station passengers can be targeted, a wide range of solutions, from **Professional Android Freestanding Digital Posters** to **Digital Video Walls**, ideal for displaying information in transportation spaces.



Education

Educational establishments are ideal environments to really get the most out of digital signage and commercial displays. The most common solution for schools, colleges, universities and other training facilities are **4K Slim Bezel Interactive Touch Displays** used as interactive whiteboards, with 75% of teachers agreeing that this technology increases students' interest in class³. **Slimline Pro Advertising Displays** can also be used as digital notice boards to communicate the latest information to students, staff and visitors.

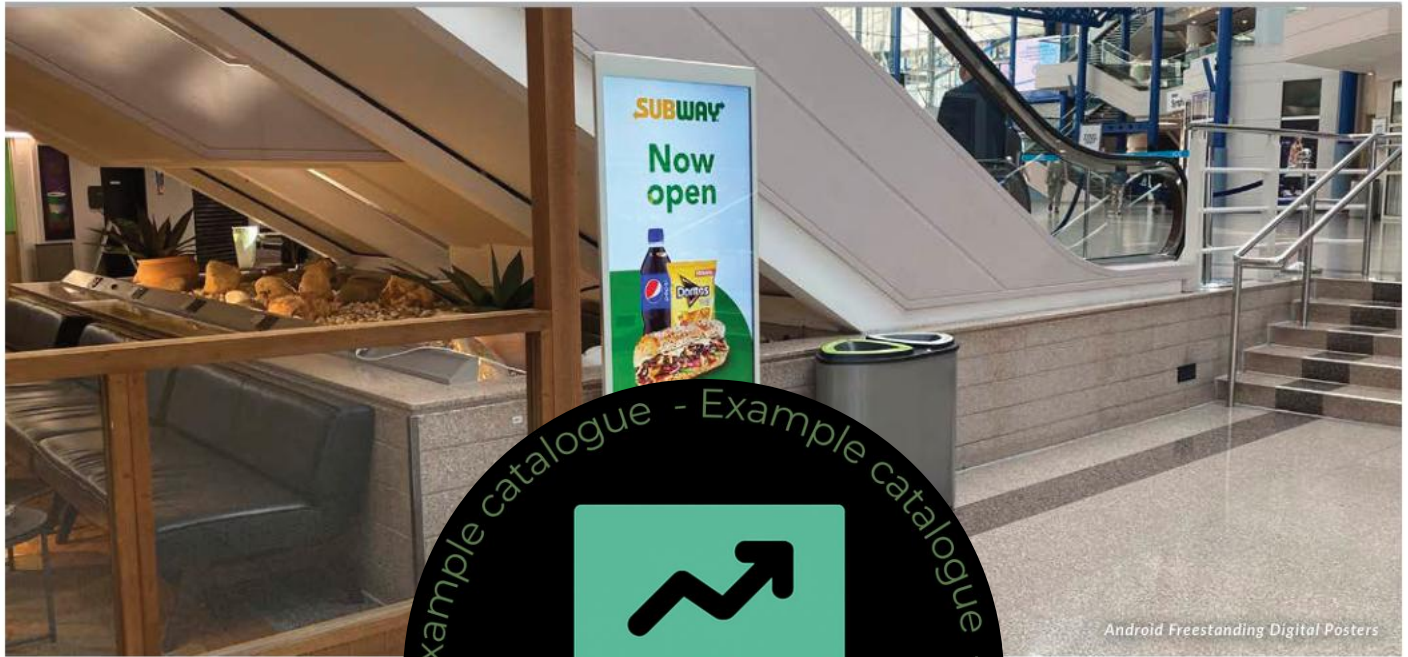


Entertainment

Locations such as casinos, theatres, cinemas, zoos, concert halls and theme parks are perfect settings for digital signage. When commercial displays are utilised in these locations average purchases increase by 29.5%¹. Our eye-catching **Android Freestanding Digital Posters** can be utilised to display any message, promotional or not. For an even bigger impact, **LCD and DV-LED Video Walls** can be implemented to create a truly memorable experience.



Digital Posters



Android Freestanding Digital Posters



Slimline Pro Advertising Displays

19" | 22" | 32" | 43" | 50" | 55"

Premium displays that combine stunning tablet-like aesthetics with a robust protective enclosure and tempered glass face.

-  Giant Tablet Styling
-  Lightweight Design
-  Toughened Safety Glass



Android Freestanding Digital Posters

50" | 55" | 65"

Show-stopping digital advertising totems with giant tablet styling.

-  Giant Tablet Styling
-  Internal Locker/AV Inputs
-  Retractable Castors
-  4K Display (65" Model Only)



Network Digital Menu Boards

32" | 43" | 50" | 55"

Cost-effective package solution; 24/7 commercial grade displays with built-in network media player and 1 year CMS software subscription.

-  FREE Network Upgrade
-  FREE 1 Year CMS Subscription
-  Narrow Bezel



High Vibrance Android Advertising Displays

43" | 55"

Perfect for brightly-lit retail environments or as a budget friendly window display.

-  700cd/m² Brightness
-  Landscape or Portrait Orientation
-  Narrow Bezel



Superslim Freestanding Double-Sided Digital Posters

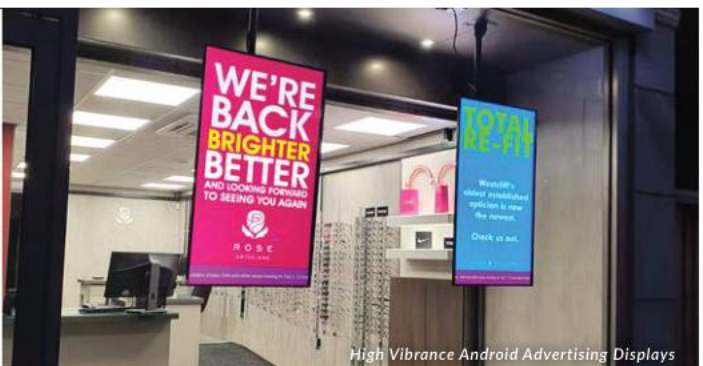
43" | 55"

Dual-sided advertising displays with incredibly slim depth and striking brushed gold frame.

-  Different Content Both Sides*
-  Premium Brushed Aluminium Finish
-  Lightweight Design

*Network Upgrade Required

	Slimline Pro Advertising Displays	Android Freestanding Digital Posters	Network Digital Menu Boards	High Vibrance Android Advertising Displays	Superslim Freestanding Double-Sided Digital Posters
Screen Sizes	19" 22" 32" 43" 50" 55"	50" 55" 65"	32" 43" 50" 55"	43" 55"	43" 55"
Glass Tempered Front	✓	✓	✗	✗	✗
Alluminium Surround	✓	✓	✗	✗	✓
Retractable Castors	✗			✗	✗
Brightness	19" & 22": 350cd/m ² 32"-55": 450cd/m ²			700cd/m ²	700cd/m ² Both Sides
Double-Sided	✗			✗	✓
Narrow Bezel	✗			✓	✗
Internal Locker	✗			✗	✗
Free Network Upgrade	✗			✗	✗
Free 1 Year CMS Subscription	✗			✗	✗
Free Wall Mount	✓	✗	✗	✗	✗



Window Displays



Ultra High Brightness Window Displays



Ultra High Brightness Window Displays

43" | 49" | 55" | 65" | 75"

Designed for outward-facing window displays in direct sunlight.

-  3,500cd/m² Sunlight Readable
-  Lightweight Enclosure
-  Sleek Thin Bezel



Ultra High Brightness Hanging Double-Sided Displays

49" | 55"

Maximise window displays by broadcasting content inwards and outwards, even in direct sunlight.

-  3,500cd/m² & 1,000cd/m² Sunlight Readable
-  Different Content Both Sides*
-  Ceiling Mount Included



Hanging Double-Sided Window Displays

43" | 55"

Maximise window displays by broadcasting content inwards and outwards.

-  700cd/m² & 700cd/m² Brightness
-  Different Content Both Sides*
-  Super Slim Design

Outdoor Displays



Outdoor Digital Advertising Displays



4K Elite Outdoor Advertising Displays

55" (Portrait Only)

A premium 4K outdoor display with high brightness, smart sensors, and the latest Android system for clear, reliable messaging in any environment.

-  3,500cd/m² Direct Sunlight Readable*
-  Easy Front Maintenance
-  IP56 Rated Enclosure



Outdoor Freestanding Digital Posters

43" | 49" | 55" | 65"

Stunning outdoor totems; perfect for any weather conditions.

-  2,500cd/m² Direct Sunlight Readable
-  Vandal Proof
-  Easy Front Maintenance

22" | 32" | 43" | 49" | 55" | 65"

Fully integrated stunning tablet-style displays; perfect for any weather conditions.

-  2,500cd/m² Direct Sunlight Readable*
-  IP65 Rated Enclosure
-  Touch Screen Version Available

*22" has a brightness of 2,000cd/m²

Outdoor Digital Android Battery A-Boards

43"

Fully portable solution ideal for any environment; display content all day and night on a single charge.

-  Tempered Anti-Glare Glass
-  IP65 Rated Enclosure
-  27 Hour Running Time
-  700cd/m² Brightness



High Brightness Outdoor Digital Android Battery A-Boards

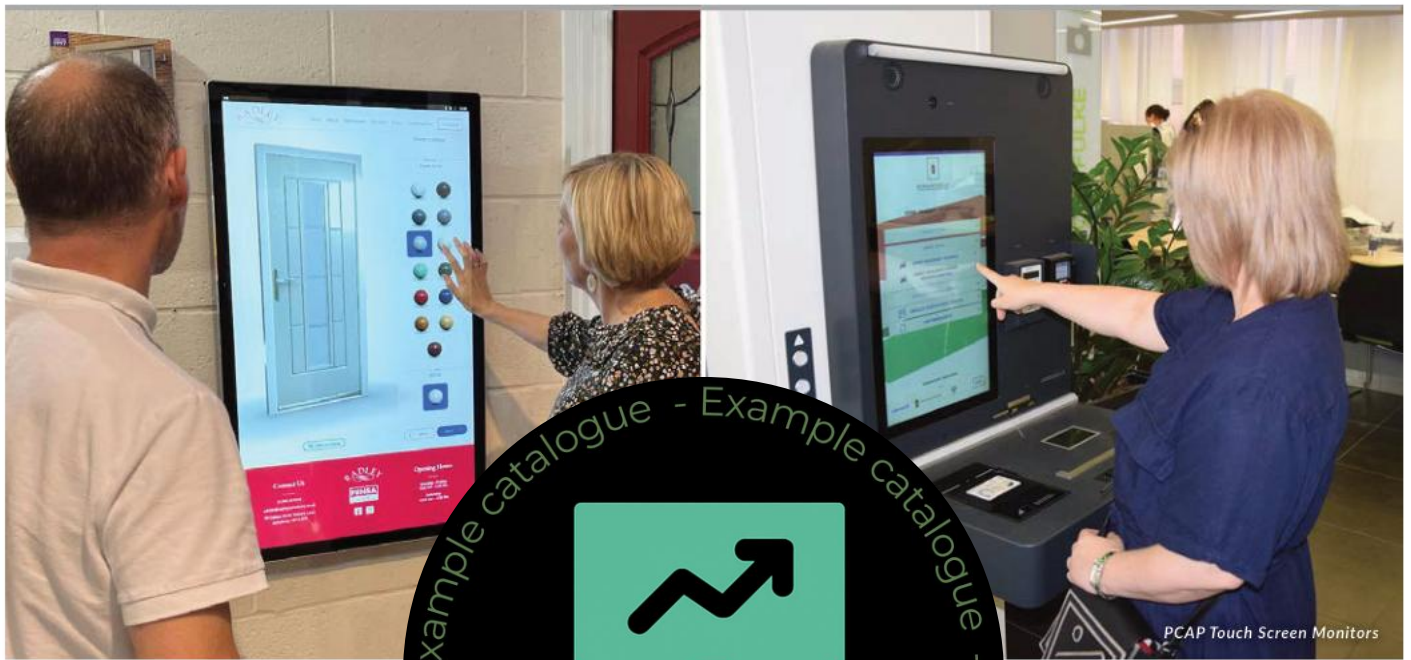
43"

Sunlight readable and fully portable solution for any space; display content all day and night from a single charge.

-  Tempered Anti-Glare Glass
-  IP65 Rated Enclosure
-  27 Hour Running Time
-  1,500cd/m² Direct Sunlight Readable



Touch Screens



PCAP Touch Screen Monitors



Android PCAP Touch Screens 22" | 32" | 43" | 50" | 55"

Perfect for interactive experiences, such as wayfinding and product browsing.

-  Giant Tablet Styling
-  Free Wall Mount
-  Integrated Android Media Player

Interactive touch solution with open frame and integrated Windows options available; ideal for kiosk integration or wall-mounted applications.

-  Optional Open Frame Bracket Included
-  Optional Integrated Windows OPS PC
-  Attach External Devices



Android PCAP Touch Screen Kiosks 43" | 50" | 55"

Fully integrated kiosk solution featuring rear ports and connections for use with built-in or third party PC.

-  All in One Touch Kiosk
-  Integrated Android Media Player
-  Internal Locker



PCAP Self Service Kiosks 22" | 27"

Self-ordering touch screen solution for quick service restaurants with integrated QR code scanner and receipt printer.

-  Easy Roll Replace
-  Built-In Windows PC
-  Anti-Theft Mounting Options
-  Additional Mounting Solutions



Freestanding PCAP Touch Screen Posters 50" | 55"

Commercial touch totems with giant tablet styling; perfect for creating interactive experiences.

-  Giant Freestanding Tablet
-  Integrated Android Media Player
-  Internal Locker
-  Retractable Castors



4K Slim Bezel Interactive Touch Displays 55" | 65" | 75" | 86"

Interactive whiteboard solution for meeting rooms with integrated annotation and mirroring software.

-  4K 4K Display
-  Optional OPS Windows PC
-  Smart Pen Stylus

Small Sized and Wide Format Displays



POS Android Advertising Displays



POS Android Advertising Displays

10" | 15"

Tablet-sized commercial displays for retail shelf edge and point of sale applications.



Power Over Ethernet (PoE)



Integrated VESA Mounting Holes



No Integrated Battery



POS Network Android PCAP Touch Screens

10" | 15"

Small-sized touch displays, ideal for meeting room booking or point-of-sale applications.



Power Over Ethernet (PoE)



Ten Point PCAP Touch Screen



Seven Colour LED Frame



Ultra-Wide Stretched Bar Displays

28" | 37"

Perfect as a banner-style endcap display in retail stores and supermarkets.



Clear HD Resolution



High Brightness



Free Network Upgrade

Ultra-Wide Stretched Bar Monitors

58:9 (76")

Perfect as a banner-style endcap display in retail stores and supermarkets.



Ultra 4K Resolution



Free Wall Mount



Optional Android Media Player



Shelf Edge Displays

23"

Grab shoppers' attention on retail shelving units with interactive eye-catching digital endcap displays.



Integrated Android Media Player



Narrow Bezel



700cd/m² Brightness

Content Management System



Multi Screen Synchronisation

Because we manufacture a wide range of hardware solutions in conjunction with My Signage Portal, we were able to fully optimise our software and minimise the perceived lag time of synchronisation to less than 0.042 seconds! This allows you to create content that flawlessly flows between multiple screens, creating the ultimate dynamic experience.



User Management

Create and manage unlimited amount of user accounts and set privileges for each user or user group. Not only can you set how much access your users have to certain functions and limit them in other areas, but you can also limit the access to specific screens, giving you complete control of what different users can do.



Customise the UI

Change the logo displayed in the top corner and choose a colour scheme based on your company's branding to make this software your own. That's right, you can fully customise My Signage Portal's software interface to your company's style for a fully personalised experience.

What Devices Can Run My Signage Portal?

This software was developed in conjunction with our wide range of digital signage hardware products. From high brightness displays to PCAP touch screens, DV-LED video walls and multiple outdoor ranges, we offer all-in-one solutions that ensure an easy and hassle-free process. All of our displays can be in use 24/7, and are paired with a 3-year warranty and lifetime technical support. Our goal is to make digital signage accessible to everyone so we offer support to our partners and their customers every step of the way.



Products Compatible with Digital Signage CMS				Touch CMS
Slimline Pro Advertising Displays	Android Freestanding Digital Posters	Superslim Freestanding Double-Sided Digital Posters	Network Digital Menu Boards	Android PCAP Touch Screens
Ultra High Brightness Window Displays	Hanging Double-Sided Window Displays	Ultra High Brightness Hanging Double-Sided Displays	High Vibrance Android Advertising Displays	Android PCAP Touch Screen Kiosks
Outdoor Digital Advertising Displays	Outdoor Freestanding Digital Posters	Outdoor Digital Android Battery A-Boards	4K Large Format Commercial Displays	Freestanding PCAP Touch Screen Posters
POS Android Advertising Displays	Ultra-Wide Stretched Bar Displays	Cloud Network Android Media Players		POS Network Android PCAP Touch Screens
LCD Video Wall Displays*	Indoor DV-LED*	Outdoor DV-LED*	4K Slim Bezel Interactive Touch Displays*	Shelf Edge Touch Displays

*When connected via Cloud Network Android Media Players

WHERE ART COMES TO LIFE



WHY VIEUNITE PRO

Strengthen Brand Awareness and Identity

Vieunite Pro helps you establish your brand in an innovative way, giving you a competitive edge. Update the artwork displayed as often as you'd like to ensure it always reflects your brand's values, or change the frame finish of your Textura Pro to perfectly match your décor and brand style.

Enhance Business Ambience and Customer Experiences

Elevate the atmosphere of your business in a completely new and unique way, opening the doors to a world of digital art. With Vieunite Pro you can captivate and inspire your audience while subtly delivering promotional content or other messaging.

Boost Employee Morale

Art has been proved to enhance creativity, improve mood, and reduce stress. With Vieunite Pro, you can engage with your staff in a meaningful way, fostering a sense of connection and belonging while improving overall morale and productivity.

Improve Internal Communication

Not only can you display art and promotional content on your Textura Pro digital canvas, but you can also share important messages with your team. Display event photos, reminders, or announcements in an eye-catching way to ensure messages are effectively received.

INSTALLATION SERVICES

With our **Installation Partners**, we can complete the whole project for you – from site survey, to installation and set up if needed:

- UK and Irish installation coverage
- Small single-screen projects
- Large-format displays
- Meeting room and conference room
- Digital signage networks
- Indoor/outdoor installations



Installations offering a full range of services – we can offer site surveys and set up guidance to ensure you get the best from your solution.



MANAGED SUPPORT SERVICES

Need ongoing product support? We can help

With our range of service agreements, we can provide all of the service support you need:

- Support and maintenance agreements
- Software management
- Digital signage CMS
- Device and network
- License renewals



CYBER SECURITY

Cyber security is one of the highest-value, highest-risk areas for your business.

We've all seen in the press breaches for some well known brands.

We can introduce you to a trusted partner delivering a fully managed cyber service built on the ARM model:

ASSESS – Identify risks and vulnerabilities.

REMEDiate – Prioritize and remediate risks.

MANAGE – Provide ongoing monitoring and improvement.

Supplying a secure environment and building an in-house security team.



Managed by a trusted partner, so you can be assured you're secure – not just hope!



SUSTAINABILITY SERVICES

**Sustainability focus is a hot topic!
No longer optional – it's expected.**

We can introduce you to a trusted partner who can work with you to develop this area for all your sites.

Calculate and manage your carbon footprint with ease – taking complete control of your environmental impact simply.

Solutions available:

- ESG consultancy
- Net Zero pathways
- Statutory reporting and tenders.



SHOWROOM VISITS

Want a live visit to see some of the products featured in action? No problem!

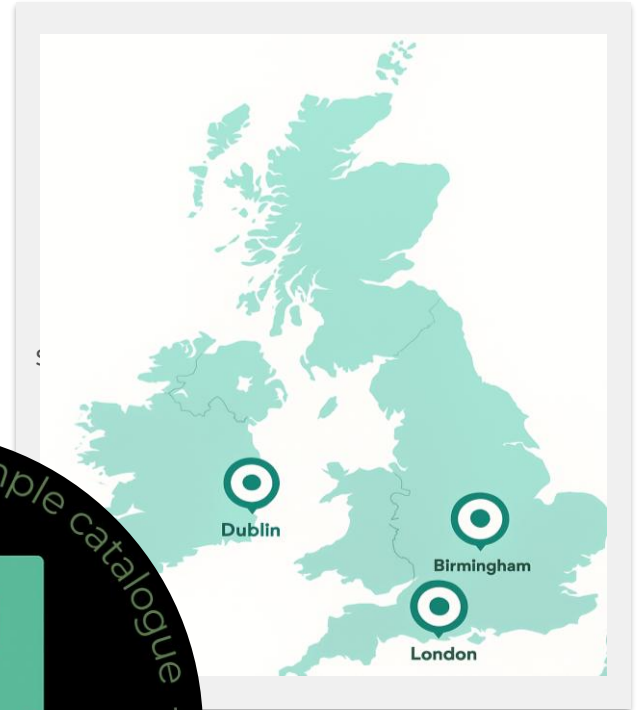
Our partners have showrooms – where you can see and understand the products before install.

Or perhaps you'd like a catalogue to understand the solutions.

Let us know and we'll contact you.

Showroom visits can:

- Experience meeting room solutions
- See digital signage and LED in various environments
- Explore how your technology complements your working day



LET'S TALK ABOUT YOUR WORKSPACE

Have a question about any of the solutions in this collection?

Need guidance on a project or looking for something not shown?

Exploring ways to improve meeting rooms or collaborative spaces?

We're here to support across all areas of AV and provide advice to full project delivery.



Whether you are in the early stages of planning or ready to move ahead, our team can guide you through the options and help you find the right solution for your business.

Talk to us about your requirements.

We're ready to support your next workspace technology project.

**Ready to enhance your
workspace and bring it to
life?**



Get in touch

Your brand here!